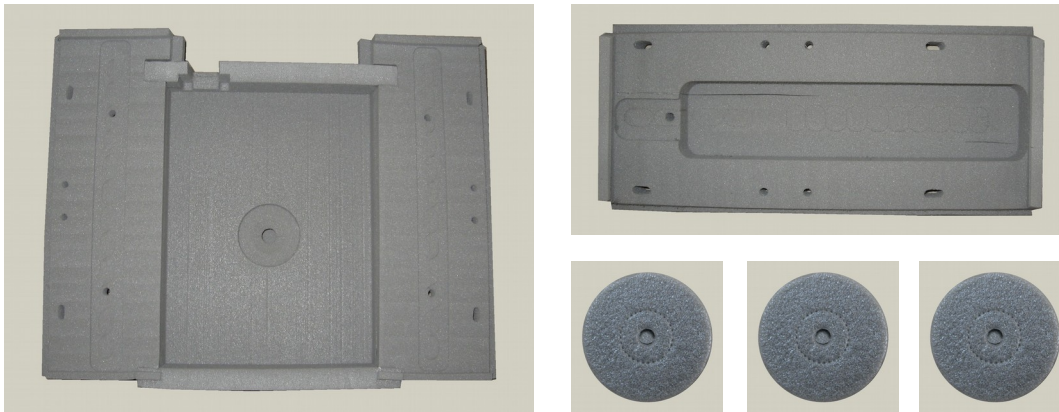




PE-FOAM Insulation Application

MP15FR

IPS 04-14-005-01



Versions	AIMS 04-14-005A (MP15FR)
Applications	tube & valve systems
Material	closed cell, cross linked Polyethylene-Foam
Colour	grey
Typical properties	flexible, hot formable, low density PE-Foam MP15FR, resistant to phosphoric acid ester e.g. Skydrol 500B
Density	max. 18 kg/m ³
Flammability	meets the requirements of ABD 0031, FAR 25.856(a)
Temperature range	- 55 °C to + 85 °C
Characteristics	<ul style="list-style-type: none">- good mechanical performance at low weight- very low water absorption- low water vapour transmission rate- excellent resistance to chemical weathering- odourless- non-toxic- non-staining



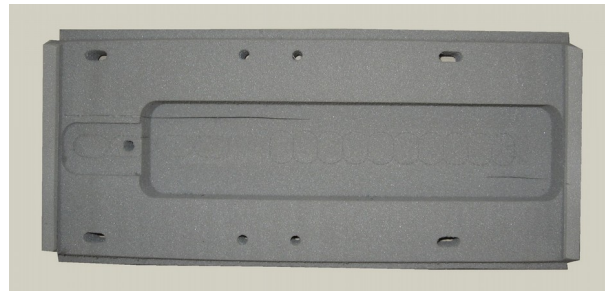
PE-FOAM Insulation Application

MP15FR

AIMS 04-14-005A

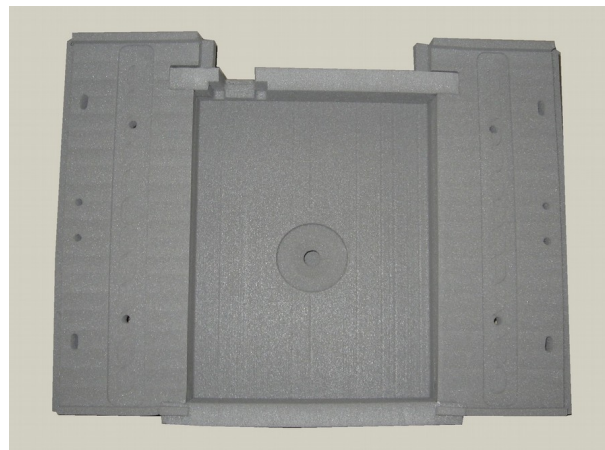
Loading system insulation

P/N	Drwg./ Norm
8670900200	G255-70900-200
8670900204	G255-70900-204
8670900206	G255-70900-206
8670900208	G255-70900-208
8670900210	G255-70900-210
8670900212	G255-70900-212
8670900214	G255-70900-214
8670901200	G255-70901-200
8670901202	G255-70901-202
8670900202	G255-70900-202



Loading system insulation

P/N	Drwg./ Norm
8677953218	G255-77953-218
8677953220	G255-77953-220
8677953222	G255-77953-222
8677953236	G255-77953-236
8677953224	G255-77953-224
8677953226	G255-77953-226
8677953228	G255-77953-228
8677953230	G255-77953-230
8677953232	G255-77953-232
8677953234	G255-77953-234



Loading system insulation

P/N	Size Code
88610030	100300
886100403	100400
88620040	200400
88630040	300400

